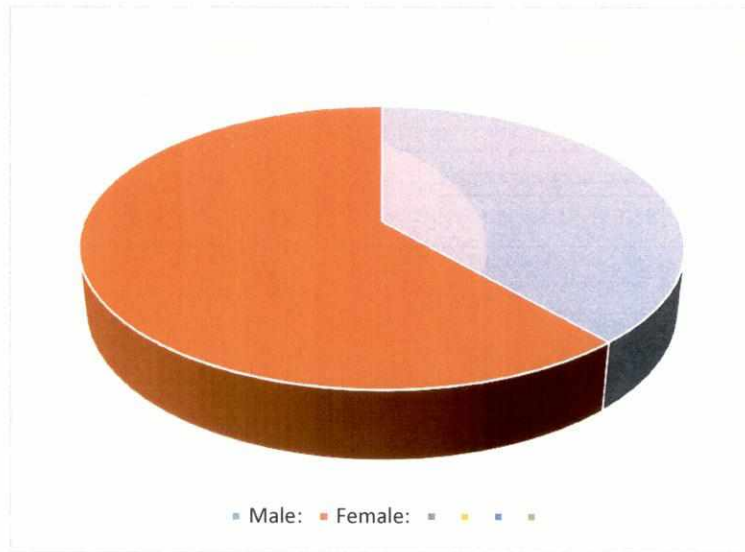


October 2020 COVID19 Demographic Study (Age/Gender) 10/3/20 - 10/31/20



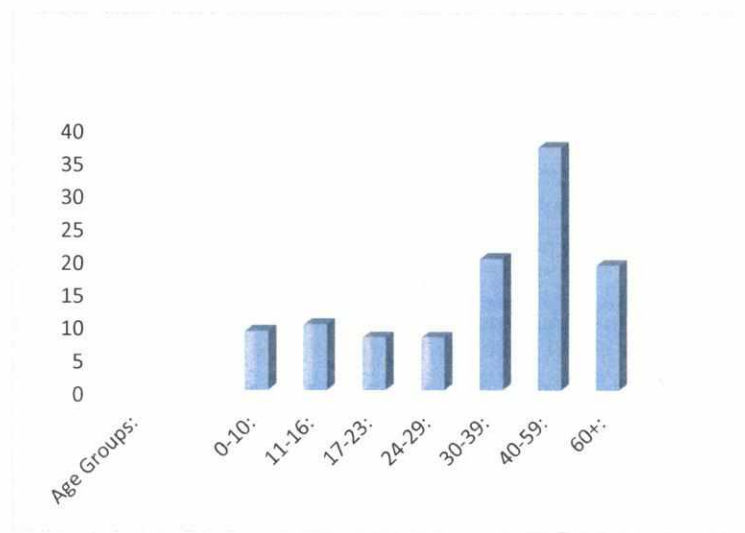
Total Cases: 101

Age Groups:

0-10:	9
11-16:	10
17-23:	8
24-29:	8
30-39:	20
40-59:	37
60+:	19

Male to Female Ratio:

Male:	39
Female:	62



Cases with Underlying Conditions:

19 (19%)